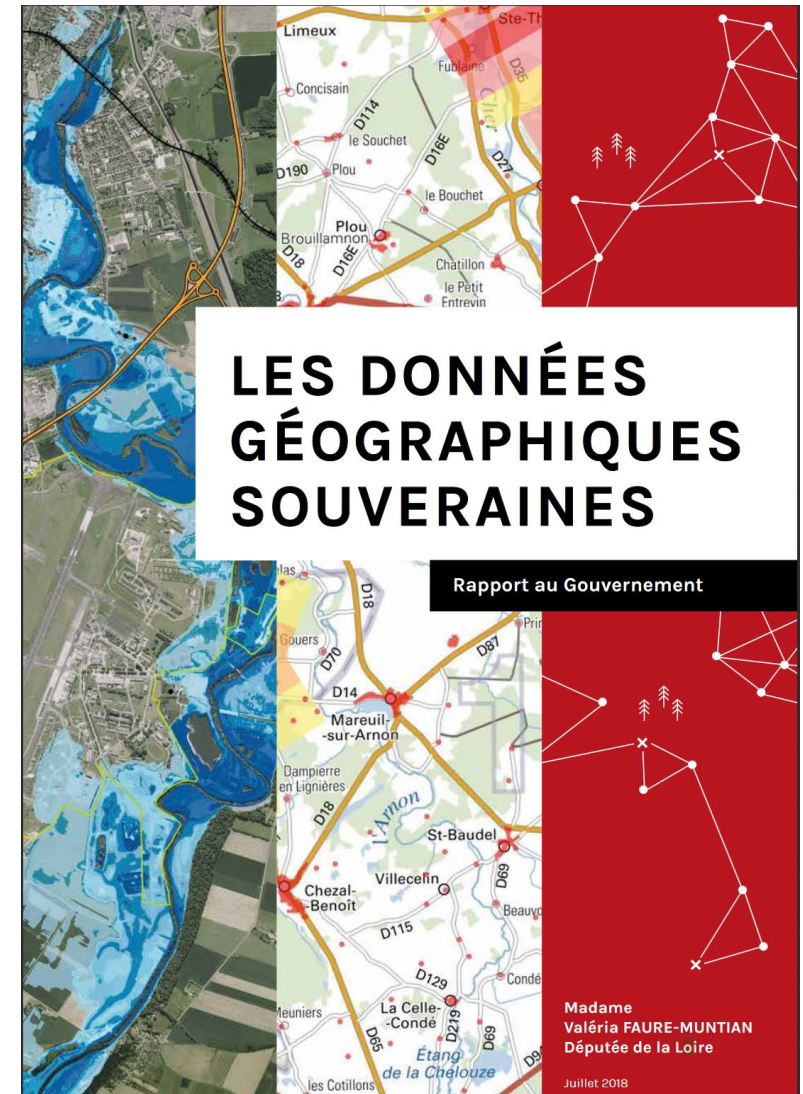


# Souveraineté géographique et autorité cartographique à l'ère du satellite et du géoweb : une perspective historique



# L'Etat et la carte : l'émergence de la carte souveraine



Marcus Gerards le Jeune, vers 1592  
Portrait d'Elizabeth 1ère

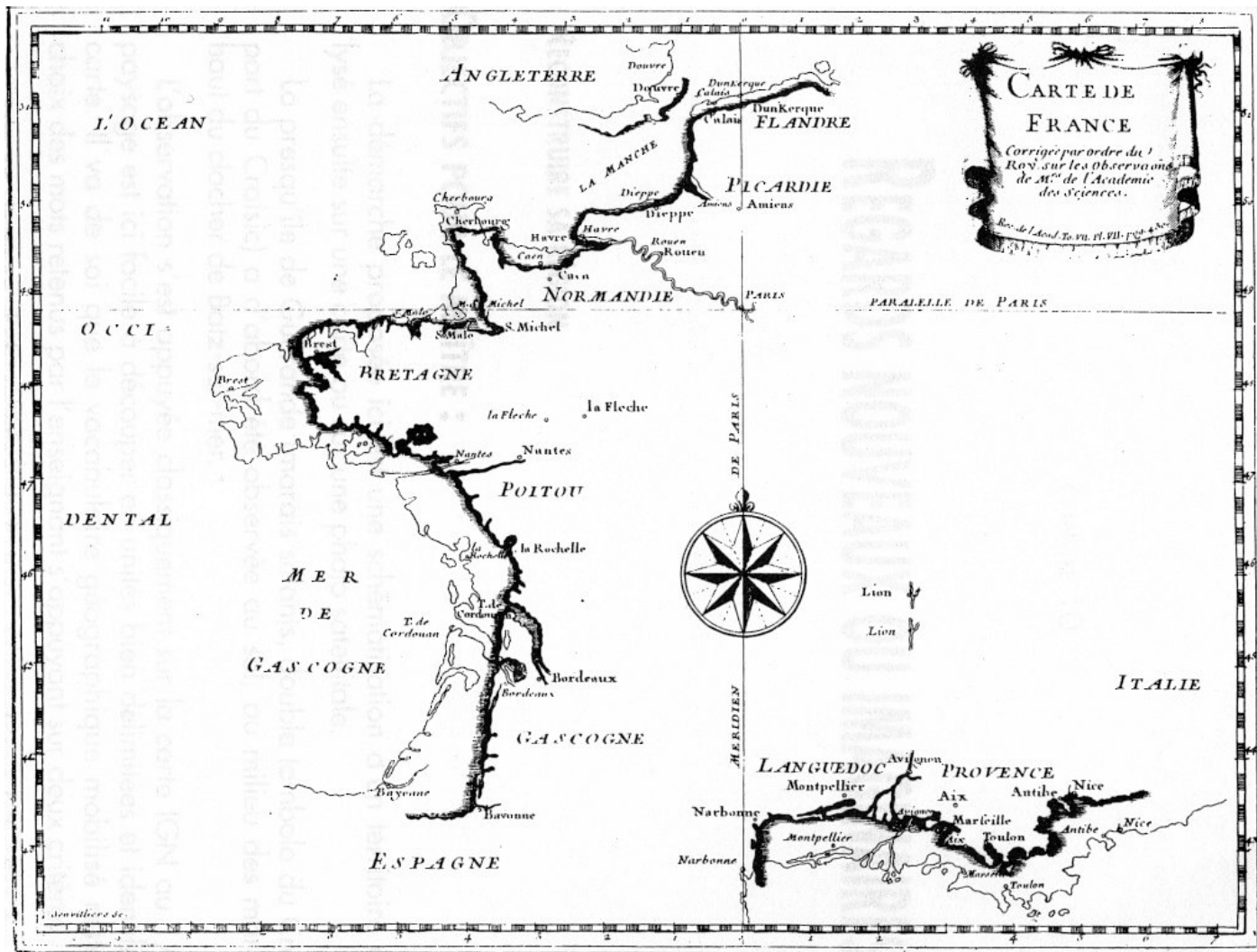




Venise, Palais des Doges, 16<sup>ème</sup> – 18<sup>ème</sup> siècles



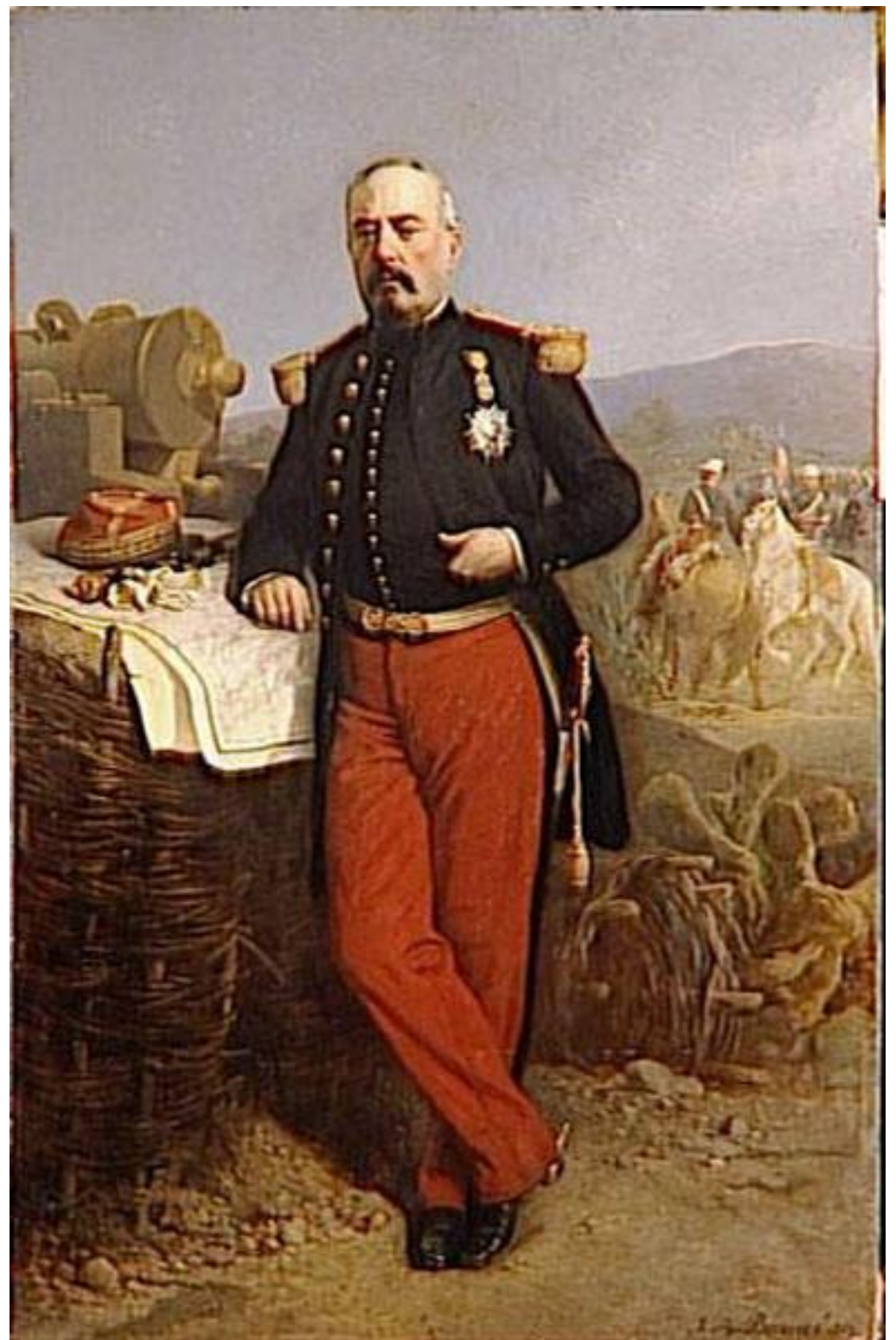
# La construction de la souveraineté cartographique



*Carte de France corrigée par Ordre du Roy sur les Observations de M.<sup>rs</sup> de l'Académie des Sciences 1682/1693*



# La carte militaire







4183. Париж. Салонъ.  
Наполеонъ передъ сраженіемъ. — Шереръ.

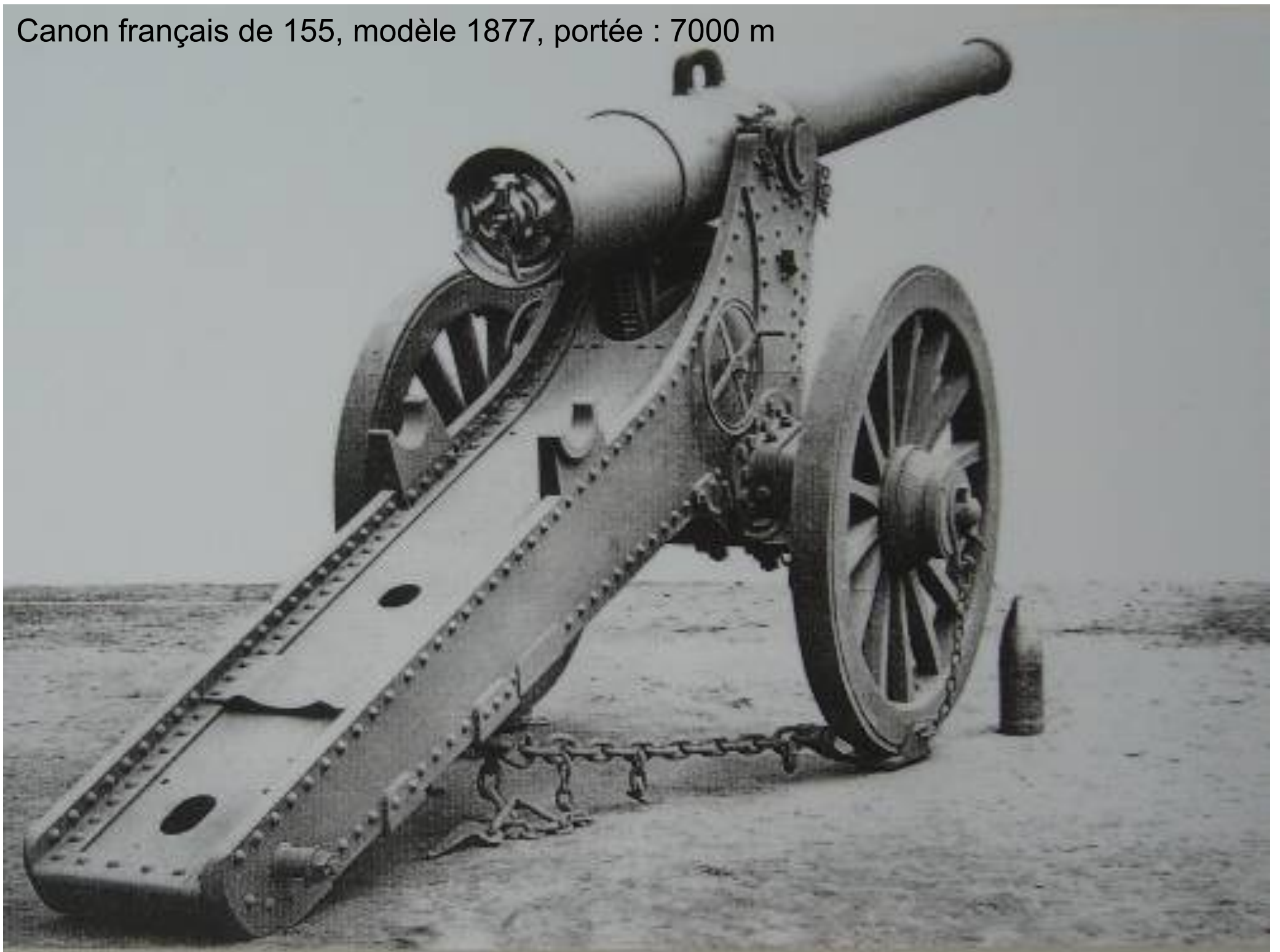


AVARVILLE MADE FOR THE CENTURY CO.

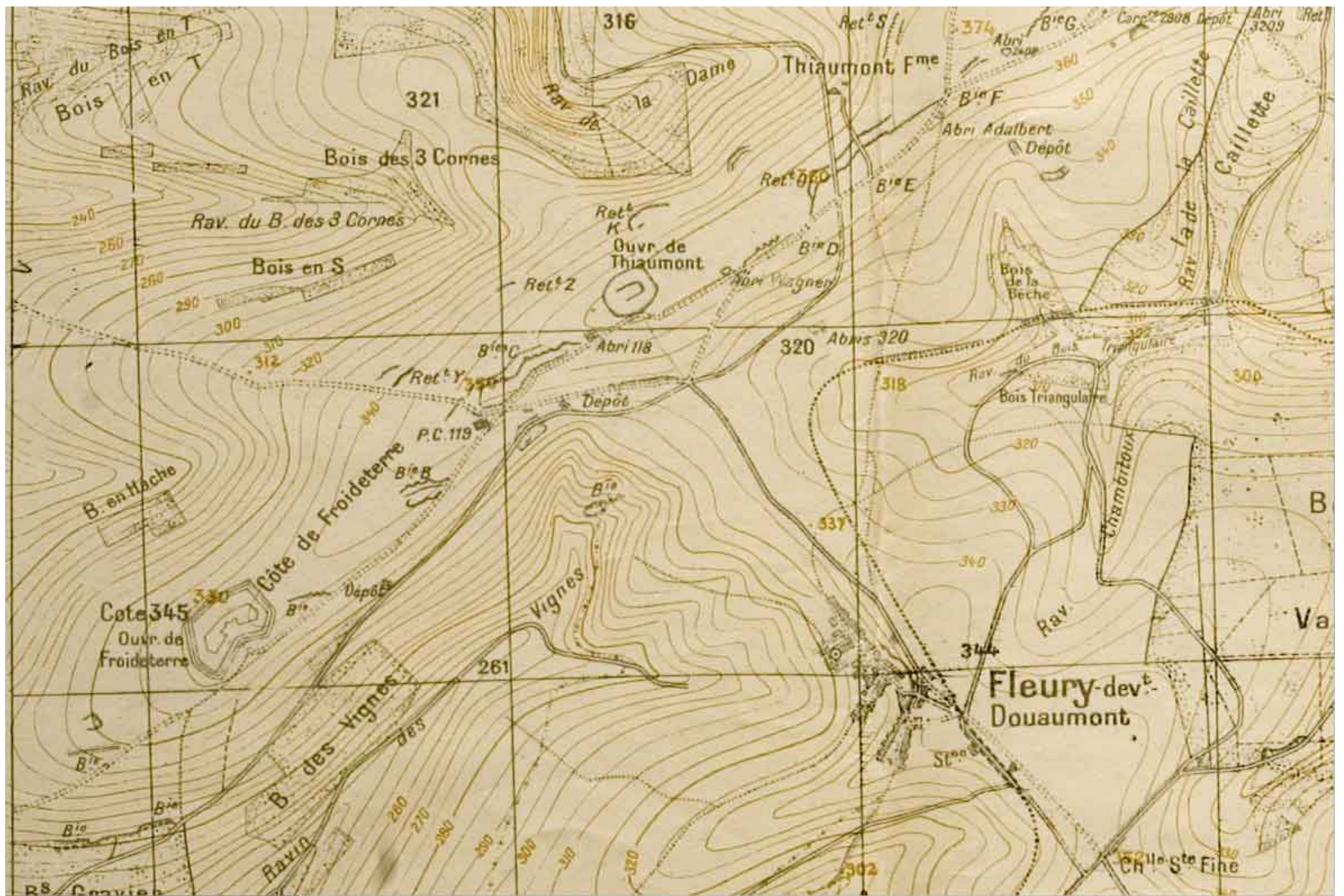
NAPOLEON AND ALEXANDER AT TILSIT STUDYING THE MAP OF EUROPE



Canon français de 155, modèle 1877, portée : 7000 m

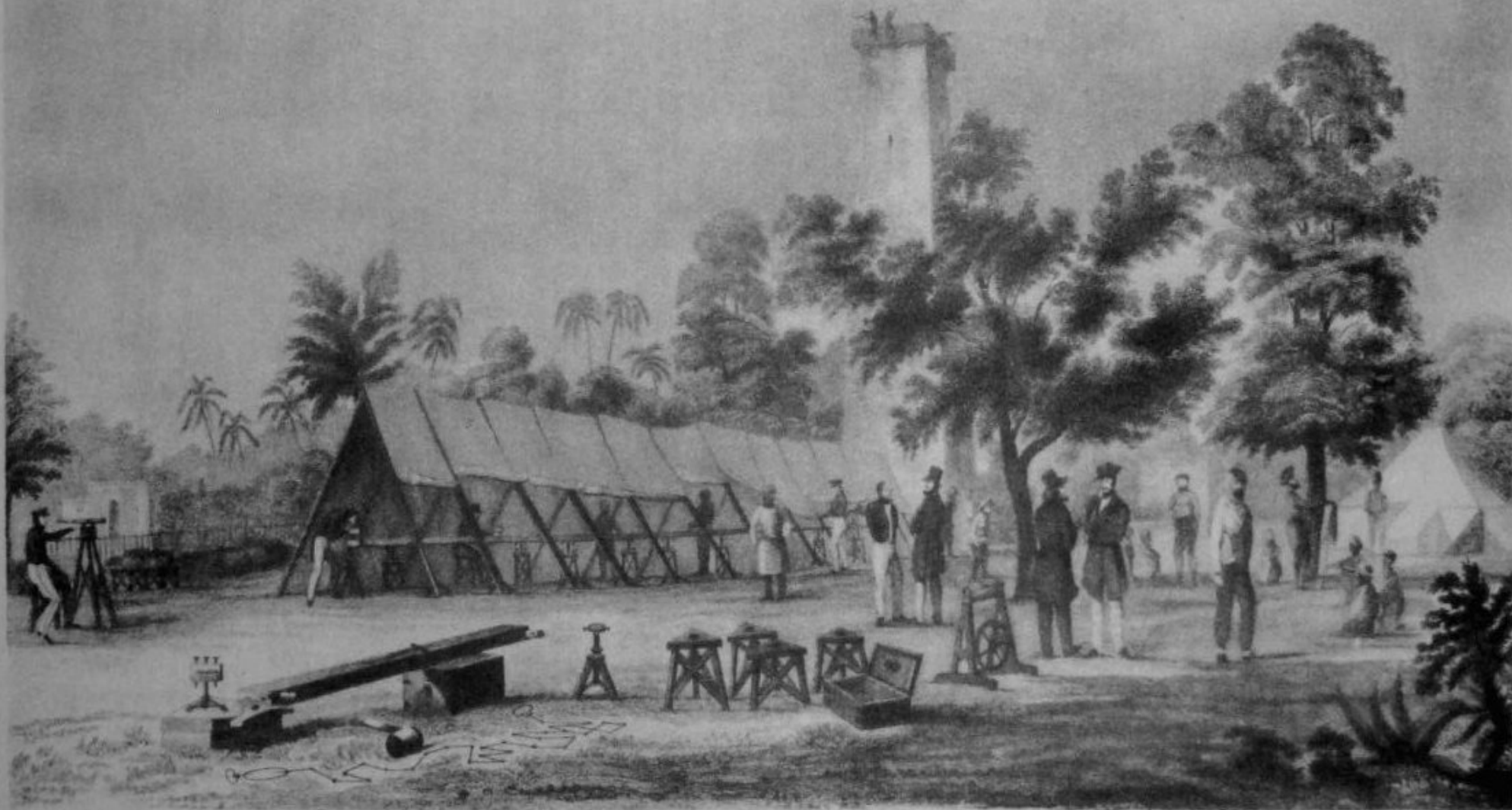








# Mesurer l'espace, dominer le territoire



CALCUTTA BASE LINE

from a sketch by James Prinsep, Jany. 1832  
[ III, 495 ; IV, ch. iv ].





Great  
trigonometrical  
survey  
(1802-1866)



महान त्रिकोणमितीय सर्वेक्षण  
The Great Trigonometrical Survey



“भावी स्थलाकृति सर्वेक्षणों का आधार, महान त्रिकोणमितीय सर्वेक्षण ने विज्ञान और प्रौद्योगिकी की प्रगति को बल प्रदान किया, जिससे वृहत् आधारभूत विकास का मार्ग प्रशस्त हुआ।”

“The Great Trigonometrical Survey, the foundation of future topographical surveys, gave impetus to growth in science and technology leading to major infrastructural developments.”

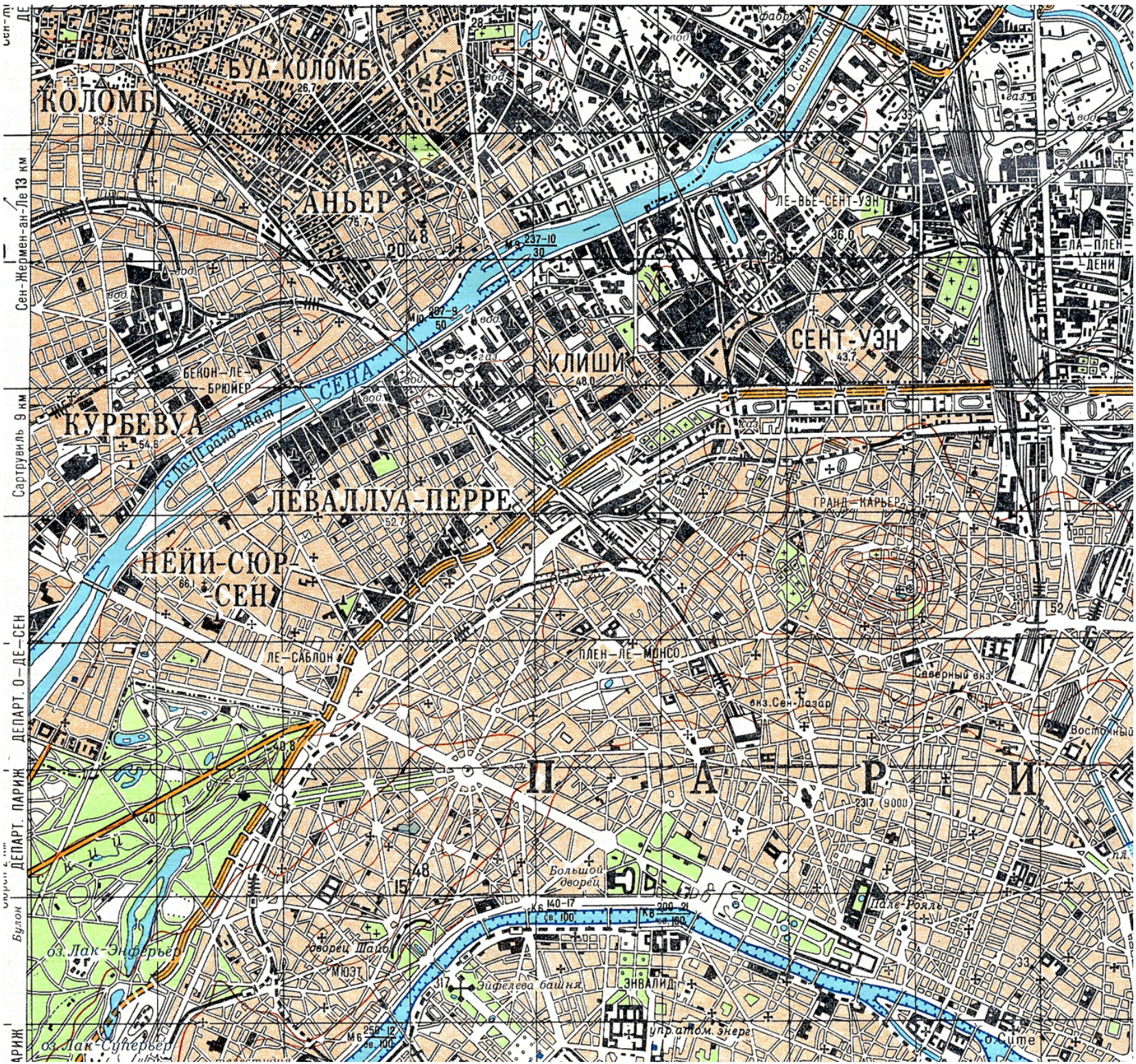


Faire la carte de l'autre : le rôle de  
la guerre froide



Avion de reconnaissance U2, vers 1955





Сент-Лі  
Сен-Жермен-ан-Ле 13 км  
Сартрувиль 9 км  
ДЕПАРТ. ПАРИЖ  
ДЕПАРТ. О-Д-СЕН  
Булак  
ПРИЖ

КОЛОМБ  
15,5

БУА-КОЛОМБ  
26,7

АНБЕР  
20,48

ЛЕ-ВЬЕ-СЕНТ-УЭН  
36,0

СЕНТ-УЭН  
43,7

КУРБЕВУА  
54,6

КЛИШИ  
48,0

ЛЕВАЛЛУА-ПЕРРЕ  
52,7

ГРАНД-КАРЬЕР

НЕЙИ-СЮР-СЕН  
66,1

ПЛЕН-ЛЕ-МОНСО

П А Р И Ж

Боз. Лак-Энферьер

Боз. Шаблон

Большой дворей

Эйфелева башня

ЭНВАЛИД

Пале-Рояль

Боз. Лак-Суперьер

М 1031

М 140-17

М 250-12

упр. атом. энерг

М 2317 (9000)

М 33





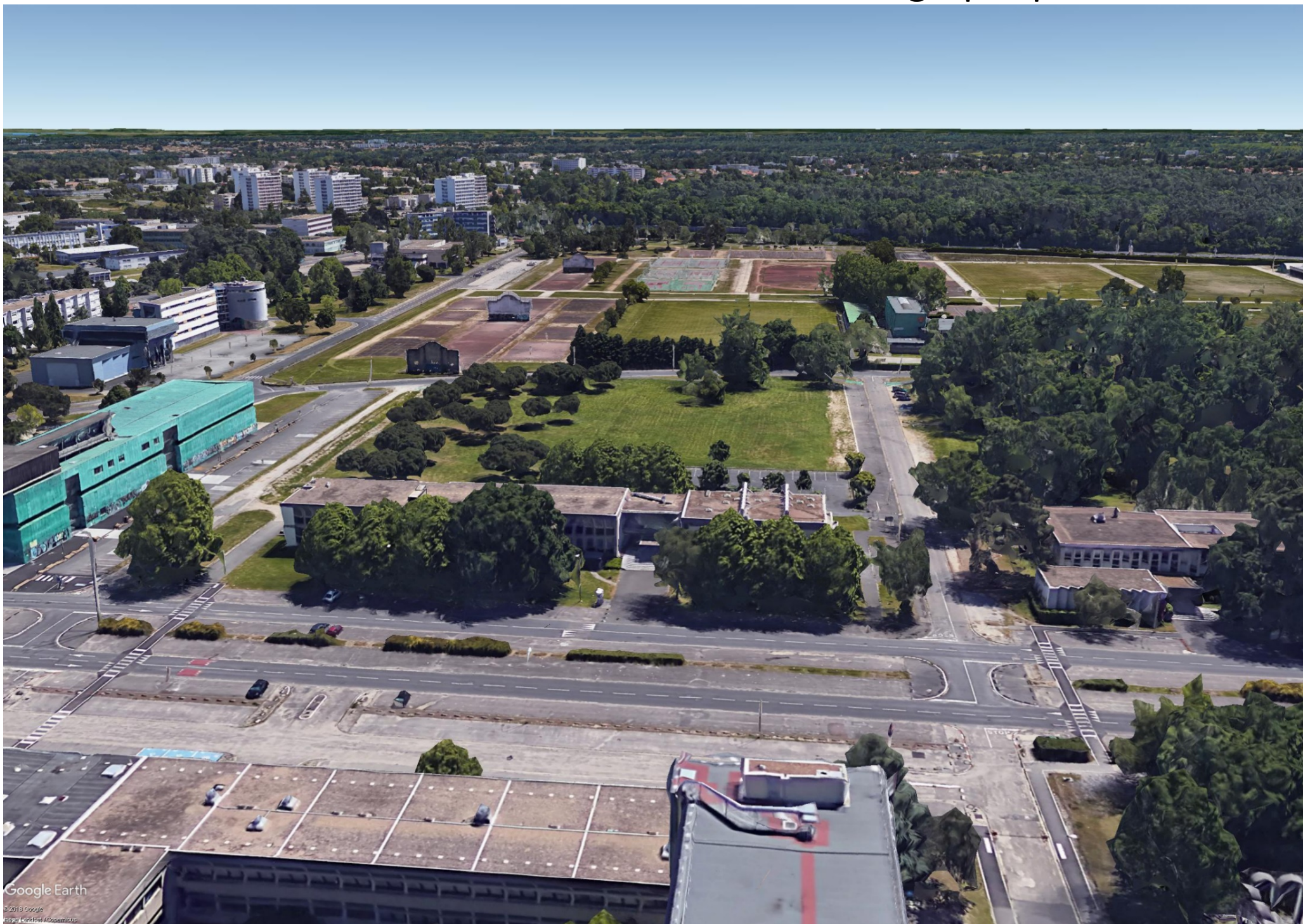
PARKING APRON

RUNWAY

18 AUGUST 1960 IMAGERY



# L'ébranlement de la souveraineté cartographique







HOME » NEWS » WORLD NEWS

## Terrorists 'use Google maps to hit UK troops'

By Thomas Harding in Basra  
12:01AM GMT 13 Jan 2007



Terrorists attacking British bases in Basra are using aerial footage displayed by the Google Earth internet tool to pinpoint their attacks, say Army intelligence sources.

Documents seized during raids on the homes of insurgents last week uncovered print-outs from photographs taken from Google.

The satellite photographs show in detail the buildings inside the bases and vulnerable areas such as tented accommodation, lavatory blocks and where lightly armoured Land Rovers are parked.

The Telegraph • FINANCIAL SOLUTIONS

## Investment and Retirement Advice

Get your FREE guide to financial planning for retirement

HOME » NEWS » WORLD NEWS » ASIA » INDIA

## Mumbai attacks: Indian suit against Google Earth over image use by terrorists

An Indian lawyer has filed a suit against Google Earth, claiming terrorists used it to plan last month's attack on Mumbai and demanding that it block satellite images of sensitive places in the country.

By Rahul Bedi in New Delhi  
6:25PM GMT 09 Dec 2008

"It (Google Earth) is a security hazard" lawyer Amit Karkhani said after filing a public interest case in the Mumbai high court that is expected to come up for hearing on December 18.

Investigators into the Mumbai terror attack, which killed 171 people, claim that the 10 gunmen who struck two luxury hotels, a nearby Jewish Centre and the crowded Chhatrapati Shivaji station, used Google Earth to memorise images of their targets to synchronise their assault.

Mr Karkhani said that he had asked Google Earth to block images of vital installations like Indian nuclear plants and defence establishments, which rendered them vulnerable to similar terrorist strikes.

India's federal defence and science and technology ministries were also party to the suit, as the former deals with security issues and the latter with dissemination of scientific information.

### India

News » World News »  
Asia » Pakistan »

### Related Partners

The best way to transfer money overseas

### In India



### India's Republic Day





Beyrouth



Tel-Aviv



# Conclusion : la cartographie, symptôme ou agent des mutations de la souveraineté ?



worldview 4  
satellite de la société  
Digital Globe